

How We Treat Small & Diffused CAD in Korea and Improve Outcomes with These Challenging Procedures

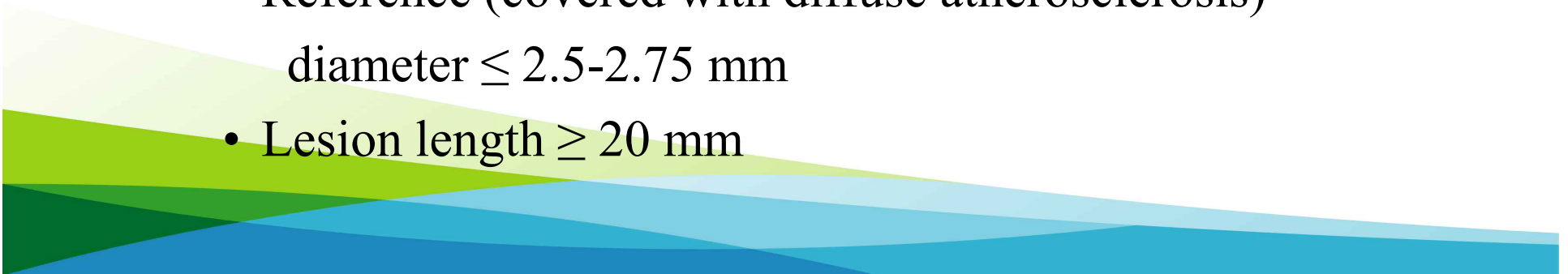
Kiyuk Chang

**Seoul St. Mary's Hospital
The Catholic University of Korea**



Small & Diffused CAD

- **Two types :**
 - **True small & diffused CAD**
 - Reference (free of atherosclerosis)
diameter $\leq 2.5-2.75$ mm
 - Lesion length ≥ 20 mm
 - **Pseudo small & diffused CAD**
 - Reference (covered with diffuse atherosclerosis)
diameter $\leq 2.5-2.75$ mm
 - Lesion length ≥ 20 mm




Treatment for pseudo small & diffused CAD

- 1. Spot stenting with DES & high-dose statin**
- 2. Full lesion coverage with multiple DESs & powerful anti-platelet therapy + anti-proliferative agents (pioglitazone, cilostazol)**



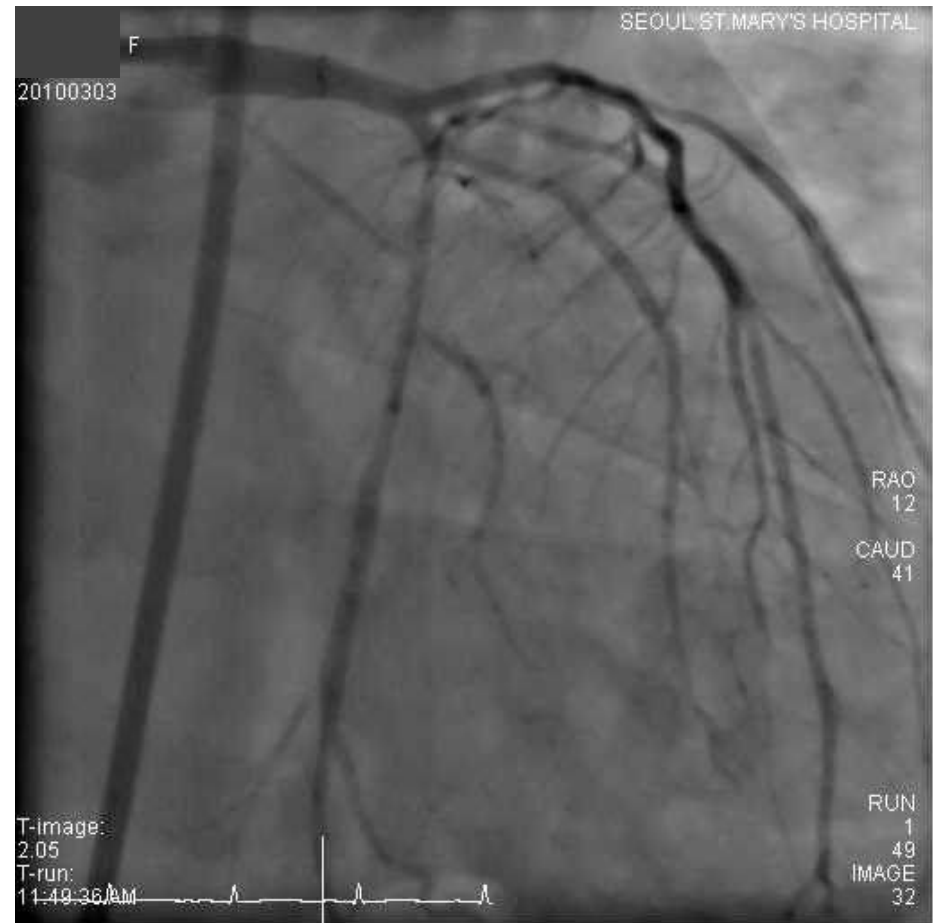
CASE 1

- **45 / F**
 - **Chief complaint :**
 - Chest pain on exertion for 1 month
 - **Risk factors :**
 - HTN (+), DM (-), Hyperlipidemia (-), smoking (-)
 - **Echocardiography :**
 - EF = 63%, no regional wall motion abnormality
- 

Coronary Angiography



PCI



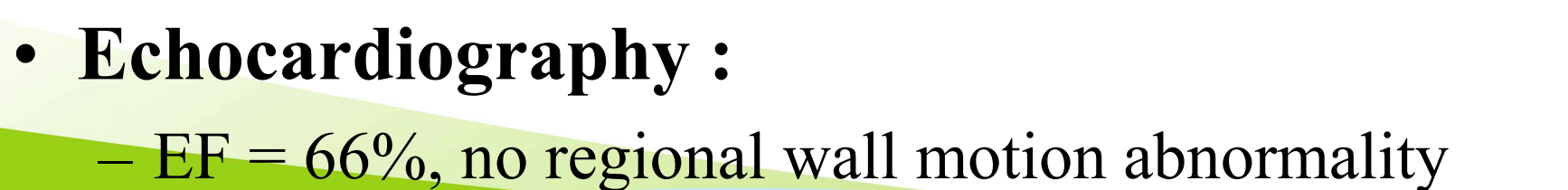
Xience 2.5 / 18 mm

Case Summary

- Lesion : Pseudo small & diffuse diseased lesion
- Tx : Spot stenting with DES & high-dose statin



CASE 2

- **57 / M**
 - **Chief complaint :**
 - Chest pain on exertion for 2 month
 - **Risk factors :**
 - HTN (+), DM (+), Hyperlipidemia (+), smoking (+)
 - **Echocardiography :**
 - EF = 66%, no regional wall motion abnormality
- 

Coronary Angiography



Reference diameter by IVUS

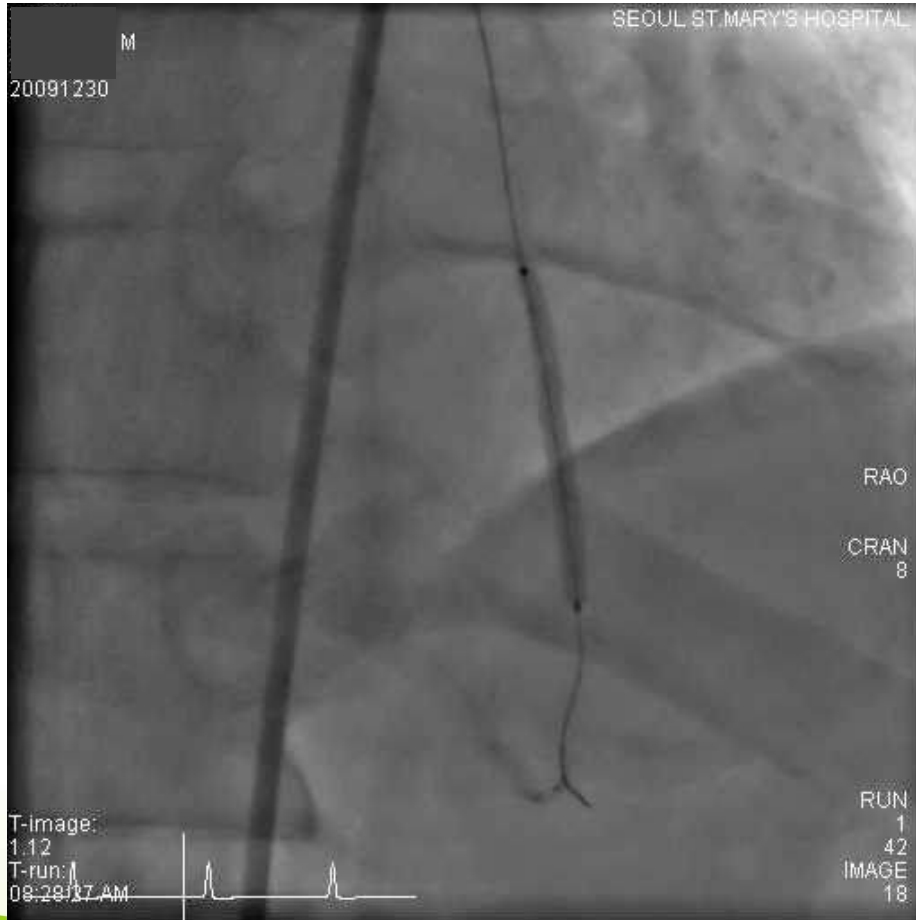
Proximal LAD : 3.0 mm

Middle LAD : 2.75 mm

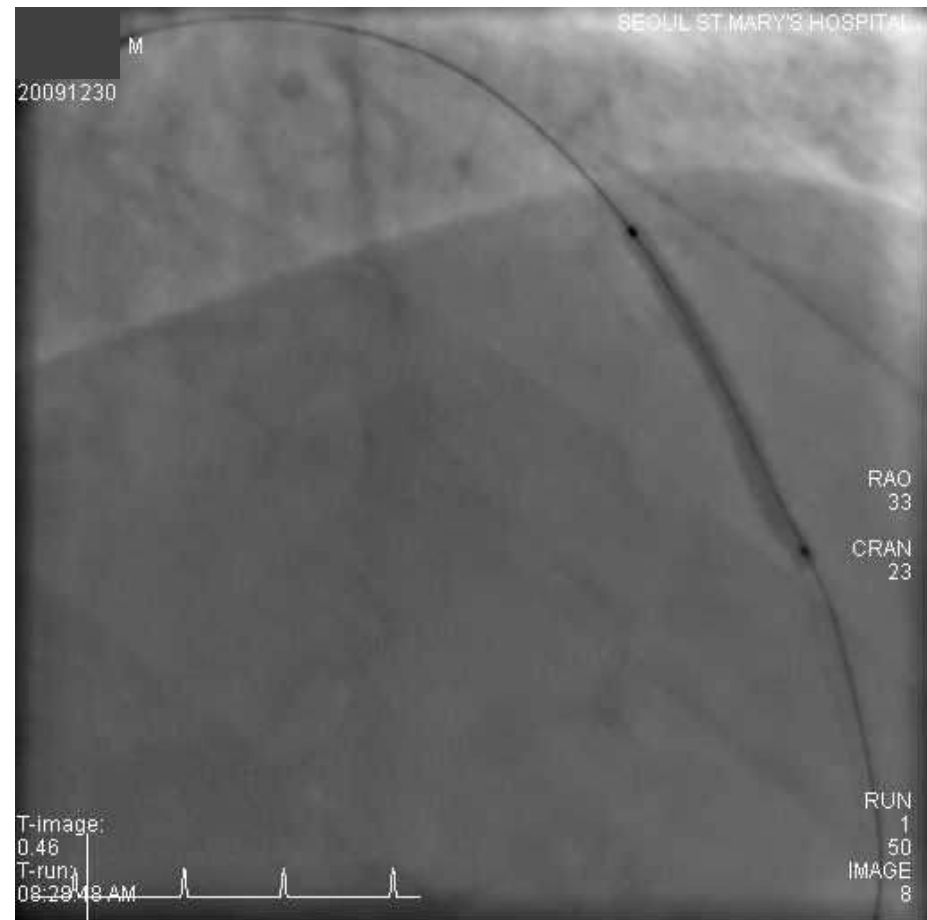
Distal LAD : 2.5 mm

Diffuse atherosclerosis on
entire LAD

PCI

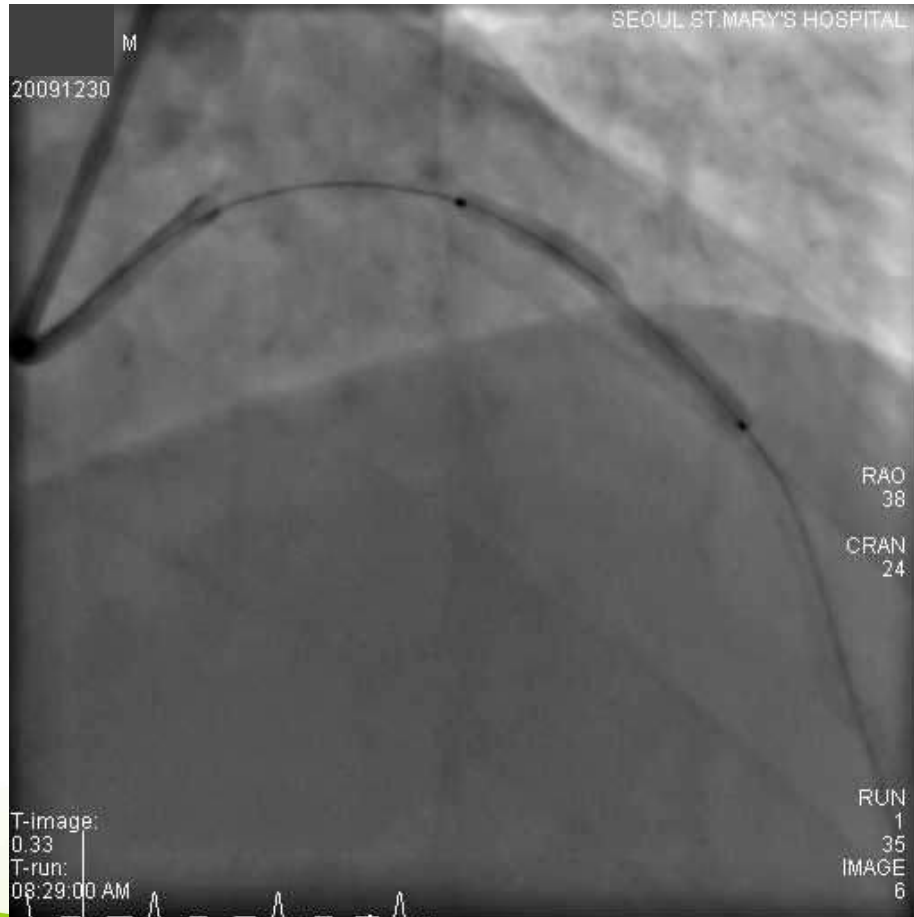


Endeavor Resolute 2.5 / 30 mm

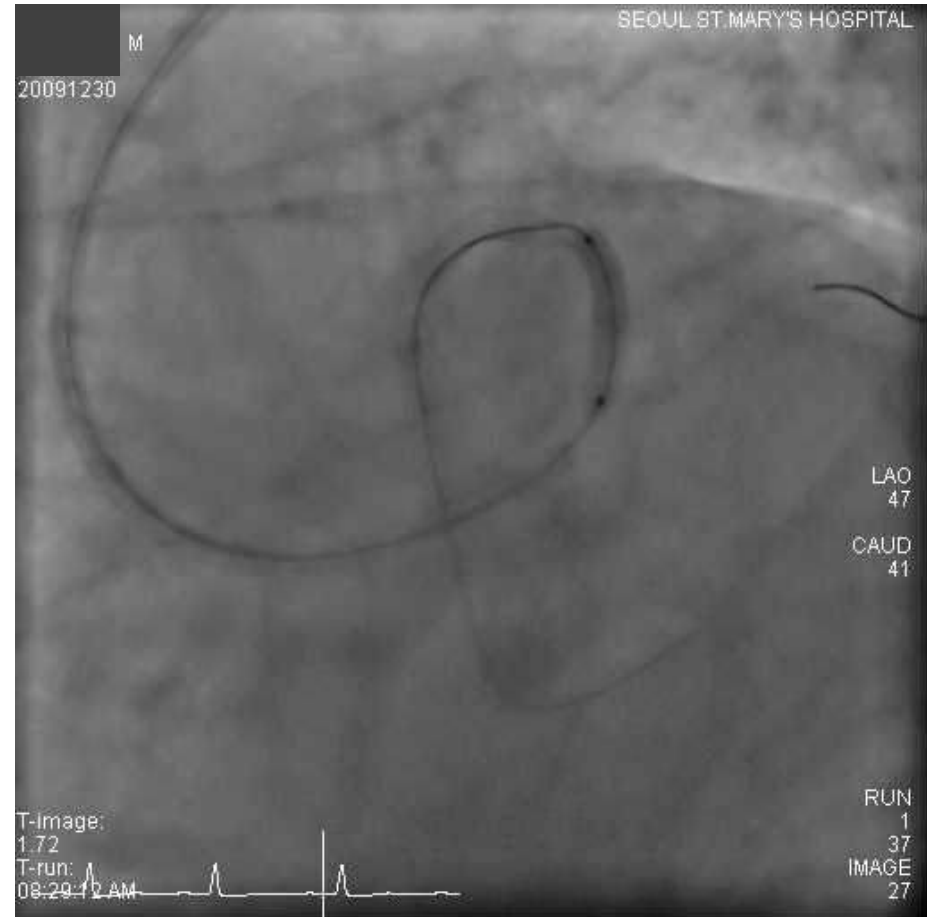


Endeavor Resolute 2.75 / 30 mm

PCI



Endeavor Resolute 3.0 / 30 mm



Endeavor Resolute 3.0 / 16 mm

Final CAG



CASE Summary

- **Lesion : Pseudo small & diffused CAD**
- **Tx : Full lesion coverage with multiple DESs
& triple anti-PLT therapy
(ASA+CLOPD+cilostazol)
& Pioglitazone**



Treatment for true small & diffused CAD

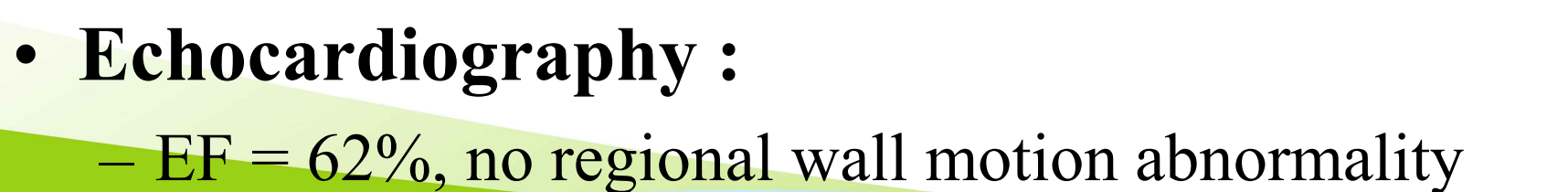
Drug-eluting balloon with bail-out BMS stenting

vs.

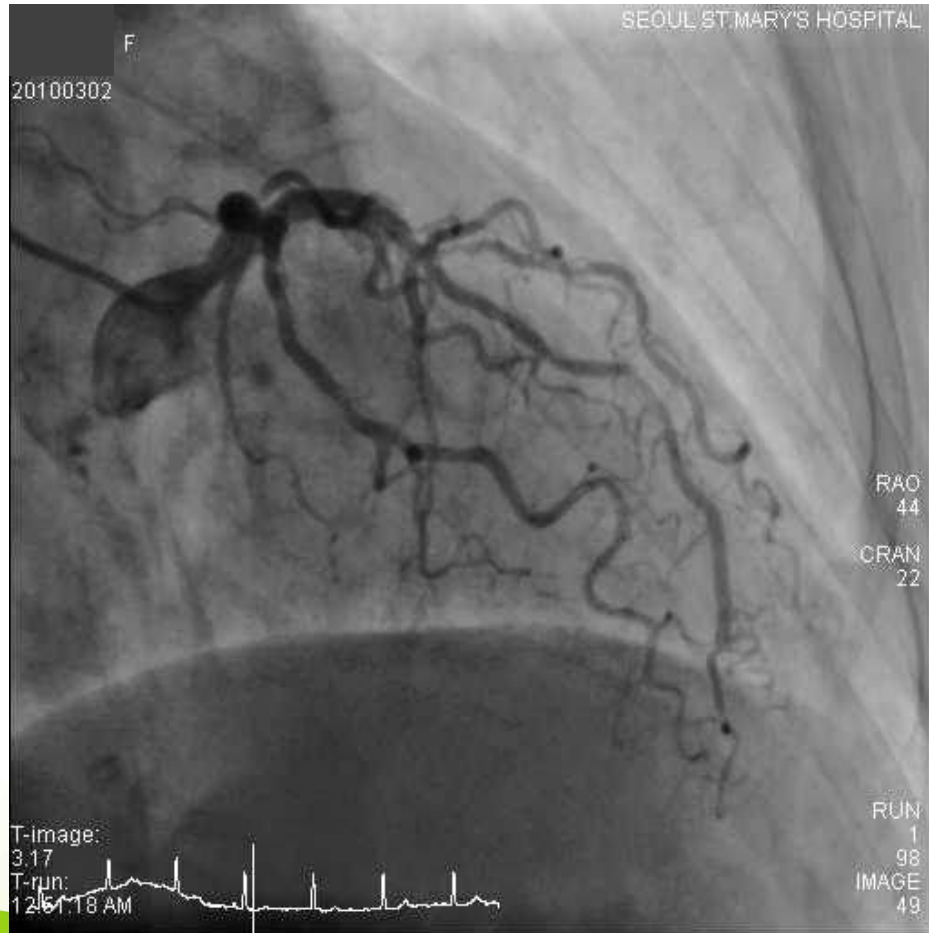
Drug-eluting stent



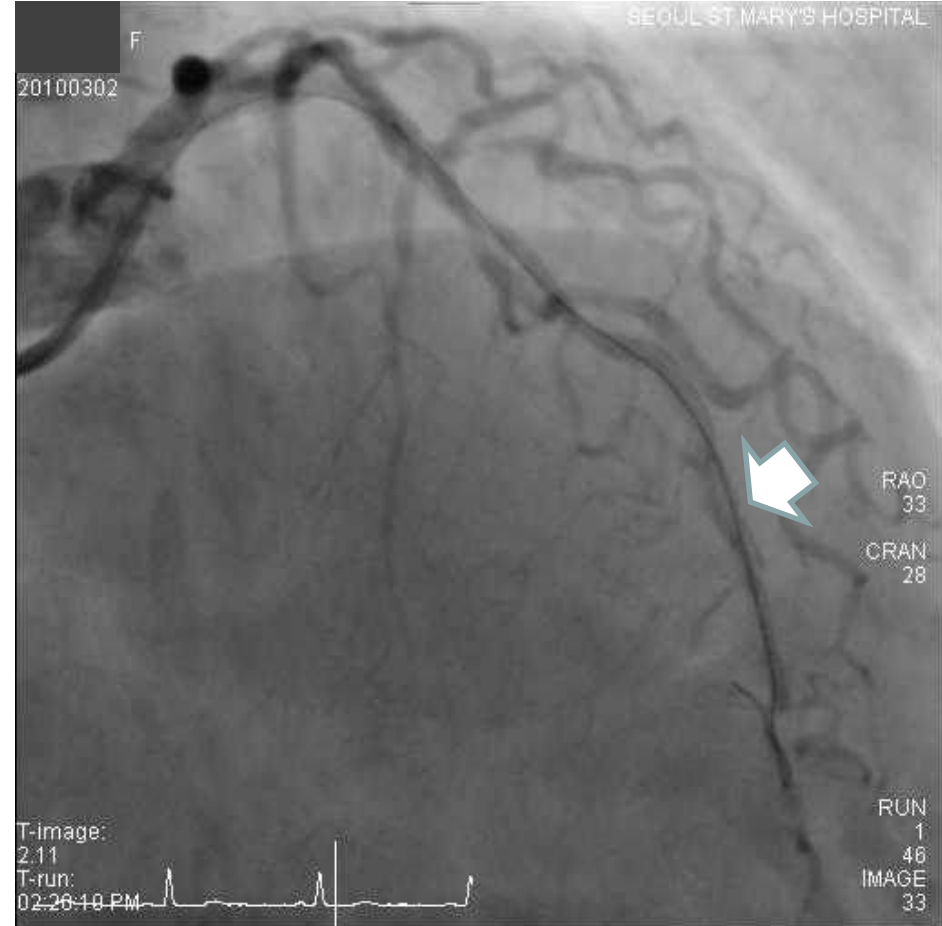
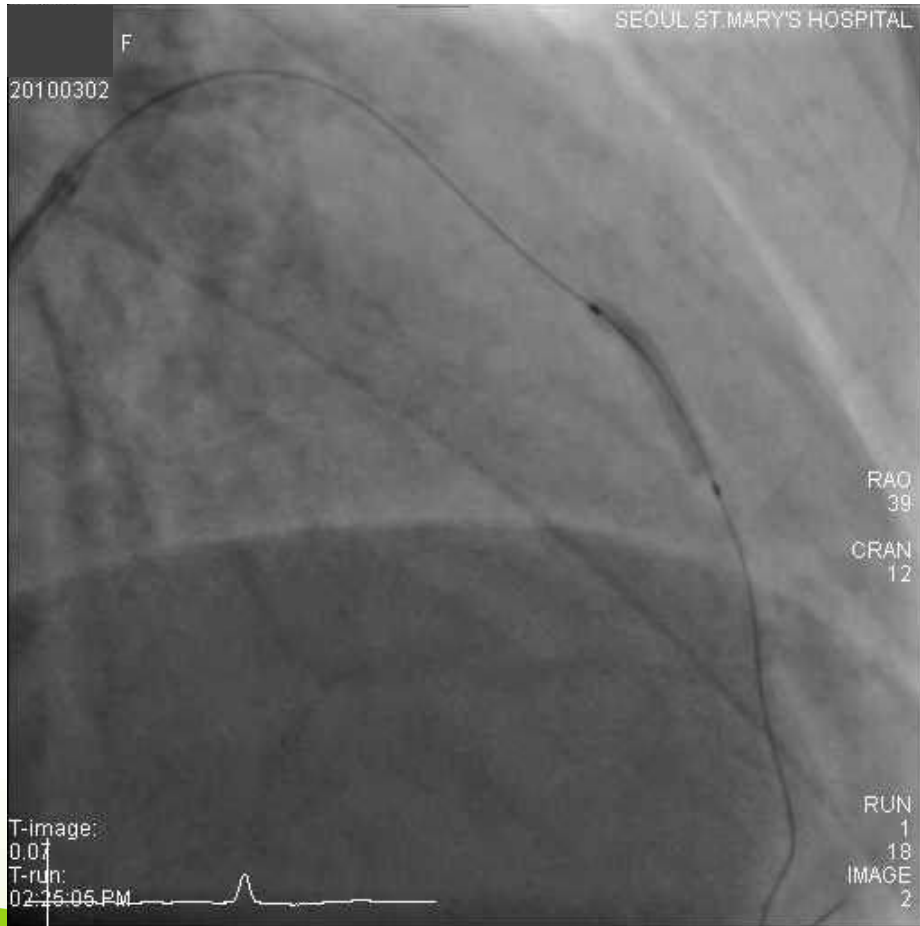
CASE 3

- **77 / F**
 - **Chief complaint :**
 - Chest pain on exertion for 7 days
 - **Risk factors :**
 - HTN (+), DM (+), Hyperlipidemia (+), smoking (-)
 - **Echocardiography :**
 - EF = 62%, no regional wall motion abnormality
- 

CAG

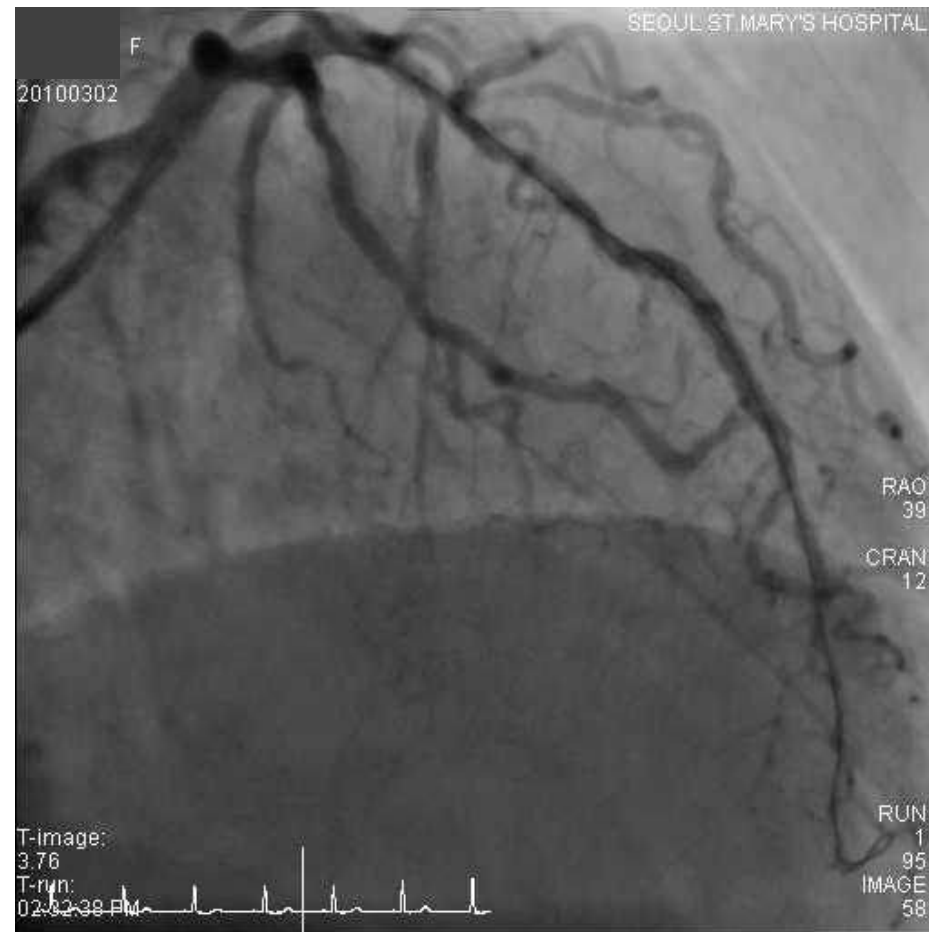
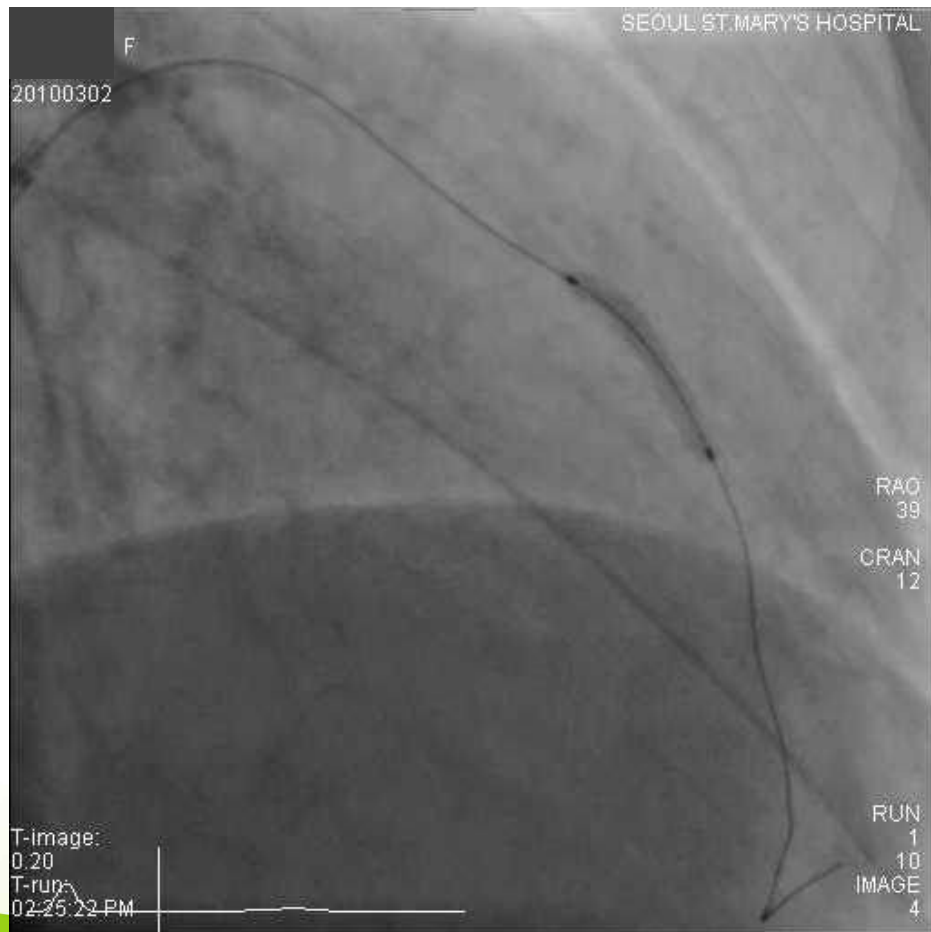


PCI



SeQuent Please 2.75 / 20 mm

PCI

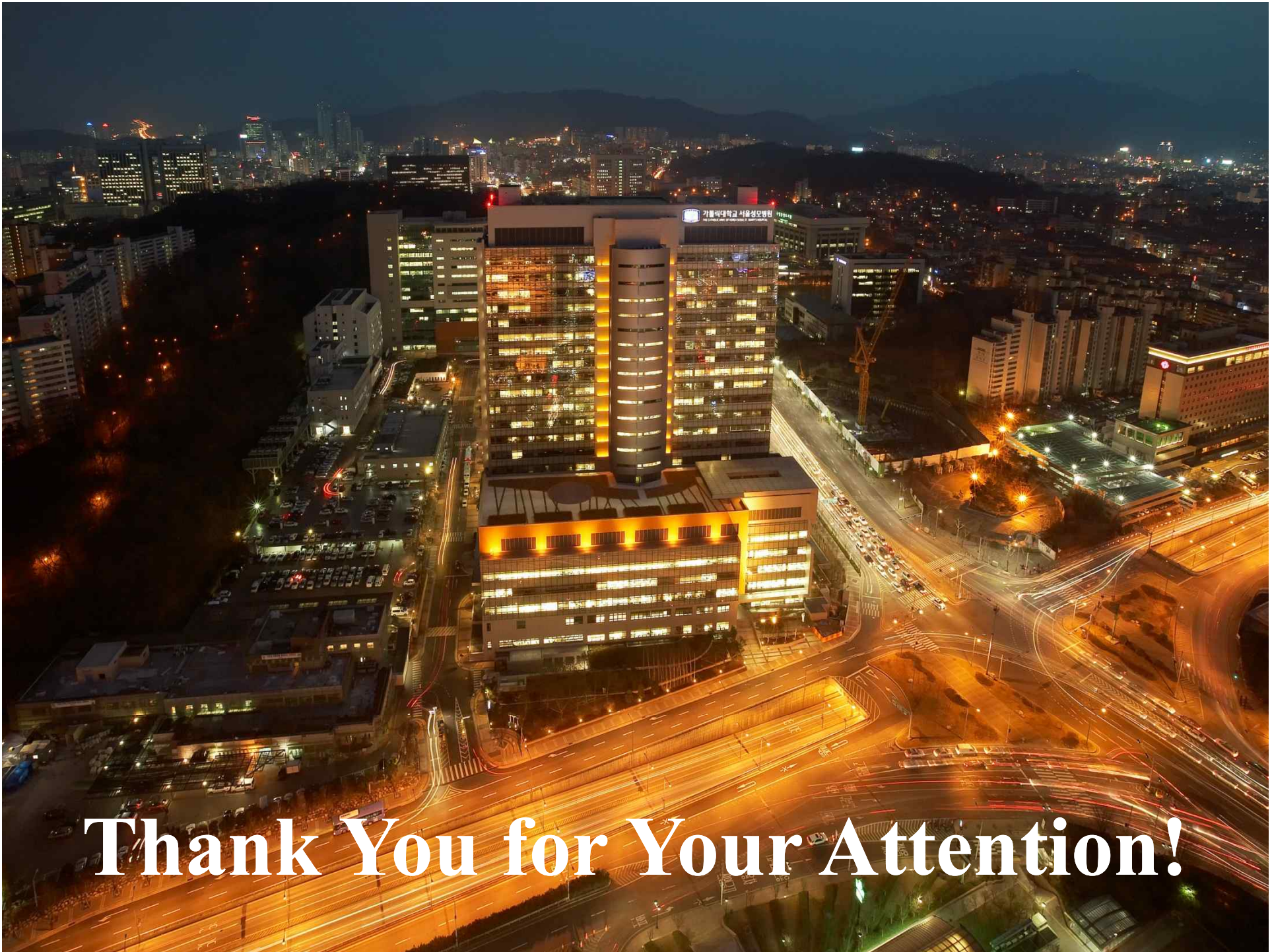


Blue 2.75 / 19 mm

CASE Summary

- **Lesion : True small & diffused CAD**
- **Tx : DEB with bail-out BMS stenting**





Thank You for Your Attention!